

# MATERIALS & CARE

At Muuto, we put an immense amount of time and care into producing items that are made to last. By following a few simple care procedures, you can preserve the design in great condition for years to come.

## ALUMINUM

Aluminum's malleability makes it a grand fit for highly detailed, durable Muuto products, bringing a light, airy feel to robust designs. Our aluminum products are powder-coated for a durable and sturdy finish. Clean the aluminum on a regular basis using a clean and damp cloth with a mild solution of detergent.

## ASH

Ash is a key material in Scandinavian furniture. We use the naturally bright, oiled ash wood to bring a light sentiment into our designs. The material is used in all of our colored furniture designs as ash is easily curved and shaped while being an excellent surface for lacquering, giving the vibrant colors a long lifespan. Color lacquered and oil ash wood should be cleaned on a regular basis with a damp, clean cloth. Remove stains using a mild mixture of water and detergent. Avoid surface contact with sharp objects as these can leave scratches in the wood and lacquer.

## COTTON

Our throws are made from 100% cotton that has been dyed and woven by hand. Cotton is a natural material that is strong and hardwearing while also being easy to clean. Our cotton products can be machine washed at 30°C / 80°F. Wash separately to prevent color changes.

## LAMINATE

The laminate used in our designs is partly made from melamine resin; one of the hardest synthetically produced organic materials that has the ability to make a surface highly resistant towards scratches and natural wear. For regular care, clean the laminate surface with a damp, clean cloth. Remove stains using a mild mixture of water and detergent.

## LEATHER

We work with some of Europe's leading leather suppliers to ensure that the leather used in our designs is of the highest possible quality. All leather used in Muuto products has been sourced from either Scandinavian or European cattle.

## ANILINE LEATHER

Aniline leather is the purest, most natural leather with only around 15% of all leathers in the world being compliant with the requirements for being classified as aniline leather. The leather shows the natural features that are inherently found in animal hides with slight variations of the material occurring for a distinct, unique character. The leather has a natural expression with a soft, warm feel. Our Refine Leather is an aniline leather quality with a smooth, soft surface for optimal seating comfort. The leather is untreated with only a thin light waxing, allowing for the leather to breathe and patinate beautifully.

## SEMI-ANILINE LEATHER

Semi-aniline leather is a full grain leather with a light top finish. The treatment of the surface makes the leather more durable. Semi-aniline leather is very soft and pliable with a high level of comfort. Our Easy Leather and Endure Leather are both semi-aniline leathers. We recommend using Endure for contract projects and public environments due to its high durability.

Natural leather does not perform well in dry air and sunlight. As a precautionary measure, we recommend to place leather upholstered furniture away from direct sunlight and refrain from having them in highly air-conditioned rooms as this can make the leather fade or dry out. Regular care of the leather helps maintain its inherent qualities and prolong the lifespan of the surface. Clean the leather with a dry cloth or soft brush. Treat and moisturize the leather four or more times a year using only special leather treatment products for aniline and semi-soft leather products.

## LINOLEUM

Linoleum consists of linseed oil, wood flour and resin. The result is a silky matte look, adding a tactile dimension to the surface of a tabletop. Linoleum can be cleaned on a regular basis with a clean, damp cloth. Remove stains using a mild mixture of water and detergent. It is recommended to treat the surface with a linoleum polish 2-3 times a year.

## OAK

Oak is a traditional Scandinavian material with durable abilities against factors such as water and fungi, giving it long-lasting properties fit for furniture. Our products in lacquered oak veneer should be cleaned on a regular basis with a damp, clean cloth. Remove stains using a mild mixture of water and detergent. Designs in solid oak, tabletops in particular, should be kept clean using a damp cloth on a regular basis while stains should be removed with a mixture of water and detergent. For long-term care, it is recommended that oak tabletops are treated with a special oak wood oil 2-3 times a year, making the wood resistant to stains and fluids.

## OREGON PINE

Oregon pine is a wood type that is softer than ash and oak, meaning that it is less robust and durable. Over time, the surface color of the wood will be slightly altered when exposed to light and indoor climates. Wipe off with moist cloth and remove excess liquid with dry cloth.

## POLYMER FELT

Polymer felt is a special composite material, made of two materials: PET and polyester. PET is partly made from recycled plastic bottles. Clean the polymer felt by vacuuming it on a regular basis. Remove stains with a clean, damp cloth.

## STEEL

The steel that we use for our designs is either painted with a powder coating or chrome plated for a durable and sturdy finish. The chrome quality used for our designs is a chrome 3 variant that is both stainless and robust. Clean both powder coated and chrome steel surfaces on a regular basis using a clean, damp cloth. Remove stains using a mild texture of water and detergent.

## TEXTILES

The textiles used for Muuto products are supplied by four different companies: Danish Kvadrat and Swedish Nevotex along with both Arve and Fideressile from Italy. The companies that we work with have been selected on the basis of their extensive knowledge within the field and state-of-the-art material qualities. For cleaning textiles at home, remove non-grease stains by carefully dabbing with a lint-free cloth or sponge that has been wrung out in warm water. If necessary, clean by dabbing with soapy water. Finally, dab the surface with clean water. For all Kvadrat upholsteries, please see Kvadrat.dk for further cleaning and maintenance instructions for your chosen textile.

## WOOD FIBER & PLASTIC COMPOSITE

Our Fiber Chair Series is designed in an innovative composite of wood and plastic fibers, a material was uniquely developed for the Fiber Chair series. With the shell consisting of up to 25% wood fibers, the shell a uniquely deep surface and soft, matte touch. Though invisible to the eye when viewed from afar, the natural details of the wood fibers are revealed when viewing the design up-close. Note that slight variations in the surface may occur due to the inherent characteristics of the material. For regular cleaning, use a clean, damp cloth. Remove stains using a mild mixture of water and detergent.

## WOOL

Our rugs are made from New Zealand wool, a natural material that is easy to clean and preserve. All rugs are woven by hand. We recommend having your wool products dry-cleaned to avoid damaging the product. For regular cleaning at home, gently vacuum clean the wool rugs. Clean stains instantly with sparkling water. We also offer a rug pad that will reduce wear and tear, keep the rug from sliding and ensure that it lays smoothly on the floor.



# MATERIAL TEXTURES

At Muuto, we use an expanded breadth of materials to express our ideas of new perspectives on Scandinavian design. Working with leading suppliers across the world, we strive to use materials that embody our quality standards to provide designs that'll pass the test of time and bring a modern touch to any space at one and the same time. Explore the various textures of materials that are used throughout the Muuto universe.

## WOOD



Ash



Full Colored Lacquered Oak



Lacquered MDF

Material Textures



Oak Veneer



Solid Oak, Natural Oil



Solid Oak White Pigmented Oil

168



Oregon Pine



Stained Dark Brown Oak Veneer

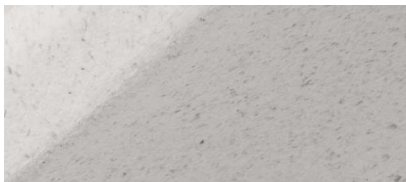
## STONE ACRYLIC COMPOSITE



## PLASTIC & WOOD COMPOSITE

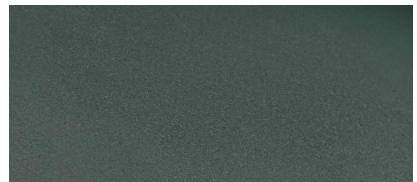


Bamboo Wood & Plastic Composite



Wood & Plastic Composite

## RECYCLED PLASTIC





METAL



Anodized Aluminum



Lacquered Steel

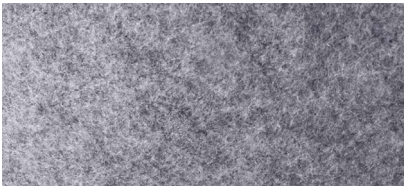


Solid Brass Aluminum



Lacquered Aluminum

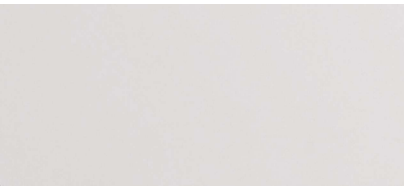
POLYMER FELT



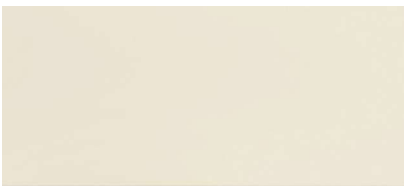
SILICONE RUBBER



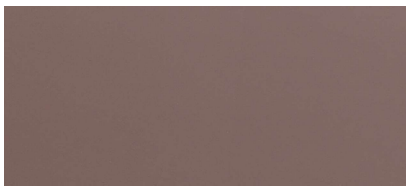
LINOLEUM



LAMINATE



NANOLAMINATE



Material Textures

CERAMICS



CORK



# TEXTILE OPTIONS

Striving to work with the best suppliers, the textiles used for Muuto products are by four different companies: Danish Kvadrat and Swedish Nevotex along with both Arve from Italy and Rohlede from Germany—all suppliers that have been selected on the basis of their extensive knowledge within the field and state-of-the-art material qualities.

\*Upholstered Muuto products that have the Declare Living Building Challenge Compliant certification only have the certification when upholstered with the following Kvadrat textiles: Canvas, Clara, Divina, Divina MD, Divina Mélange, Fiord, Hallingdal, Remix, Rime, Steelcut, Steelcut Trio and Vidar.

Please note that all variants are subject to stock availability and certification across regions. Consult our price list for further information.



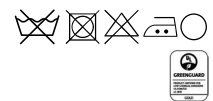
## BALDER BY KVADRAT

Designer: Fanny Aronsen

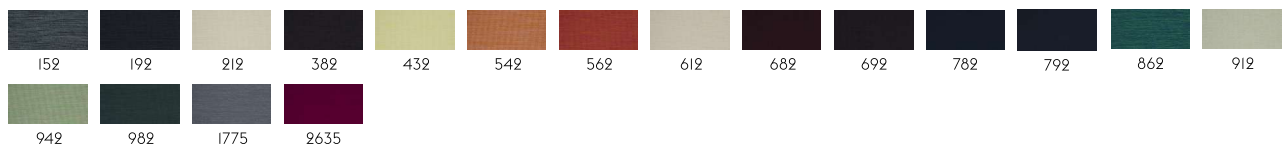
Composition: 68% new wool, 26% cotton, 6% nylon

Durability: 100.000 Martindale / Lightfastness 6

Sustainability: Natural fibres / Sustainable resource. Complies with Greenguard Gold Certification.



132



## CANVAS BY KVADRAT

Designer: Giulio Ridolfo.

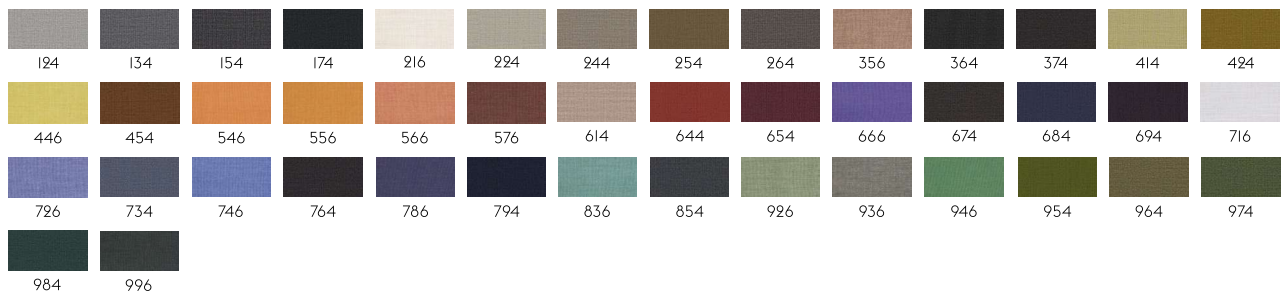
Composition: 90% new wool worsted, 10% nylon.

Durability: 100.000 Martindale / Lightfastness 5-7 (ISO I-8).

Sustainability: Complies with both EU ecolabel "The Flower" and Greenguard Gold Certification.



114



170



## CLARA BY KVADRAT

Designer: Anne Birgitte Hansen.

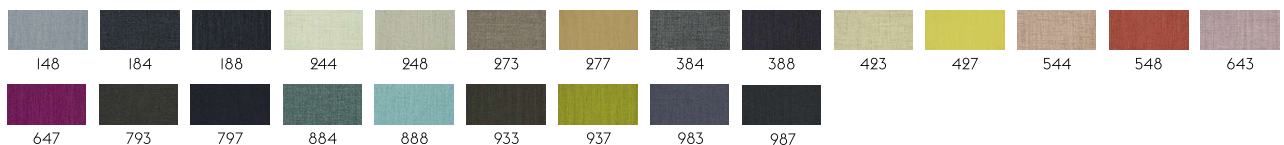
Composition: 92% new wool worsted.

Durability: 80.000 Martindale.

Sustainability: Complies with both EU ecolabel "The Flower" and Greenguard Gold Certification.



144



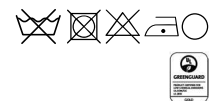
## CLAY BY KVADRAT

Designer: Vincent Van Duysen for Kvadrat.

Composition: 76% Linen, 21% Cotton, 3% Polyester

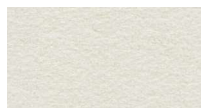
Durability: 45.000 Martindale / Lightfastness 4-6.

Sustainability: Complies with Greenguard Certification.



1





#### DIVINA BY KVADRAT

Designer: Finn Sködt.

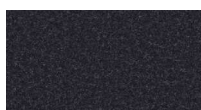
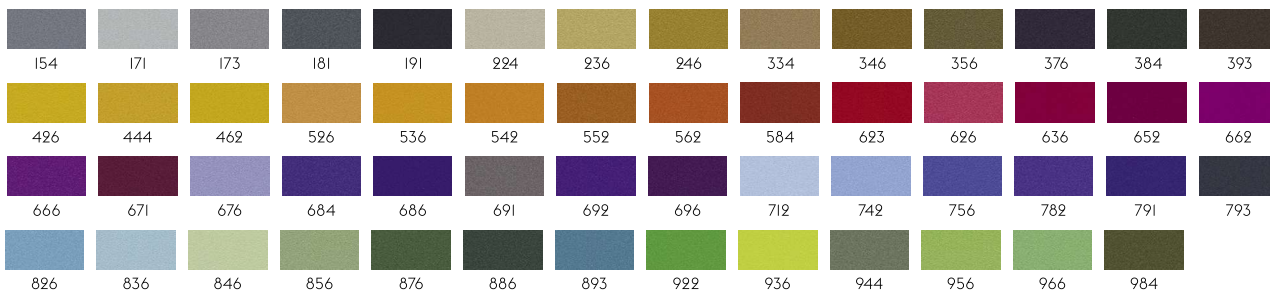
Composition: 100% new wool.

Durability: 45.000 Martindale.

Sustainability: Complies with both EU ecolabel "The Flower" and Greenguard Gold Certification.



106



#### DIVINA MD BY KVADRAT

Designer: Finn Sködt.

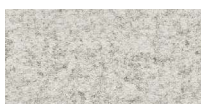
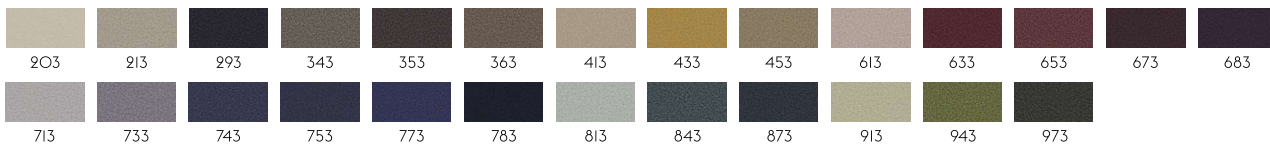
Composition: 100% new wool.

Durability: 45.000 Martindale.

Sustainability: Complies with both EU ecolabel "The Flower" and Greenguard Gold Certification.



193



#### DIVINA MELANGE BY KVADRAT

Designer: Finn Sködt.

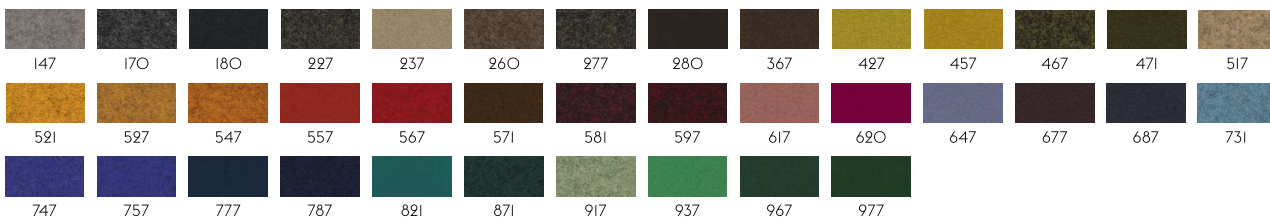
Composition: 100% new wool.

Durability: 45.000 Martindale.

Sustainability: Complies with both EU ecolabel "The Flower" and Greenguard Gold Certification.



120



#### FIORD BY KVADRAT

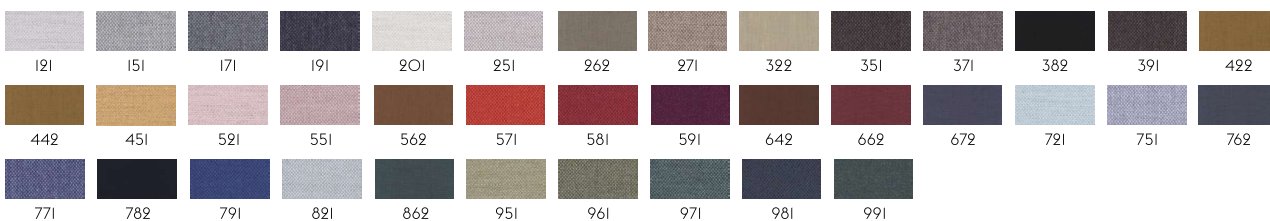
Designer: Tone Barnung & Louise Sigvardt

Composition: 92% new wool worsted, 8% nylon.

Durability: 60.000 Martindale / Lightfastness 5-6.



101



#### FOREST NAP BY KVADRAT

Designer: Akira Minagawa

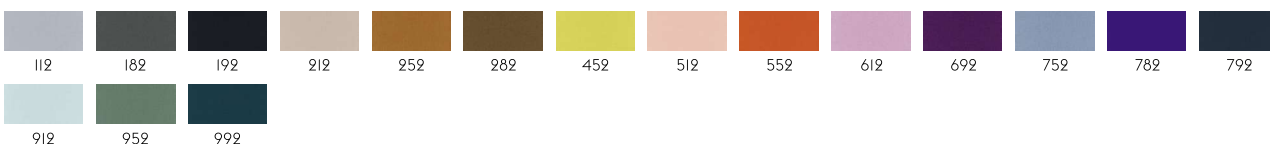
Composition: 95% new wool (worsted), 5% nylon

Durability: 50.000 Martindale / Lightfastness 5.

Sustainability: Complies with both EU ecolabel "The Flower" and Greenguard Gold Certification.



102





### HALLINGDAL 65 BY KVADRAT

Designer: Nanna Ditzel

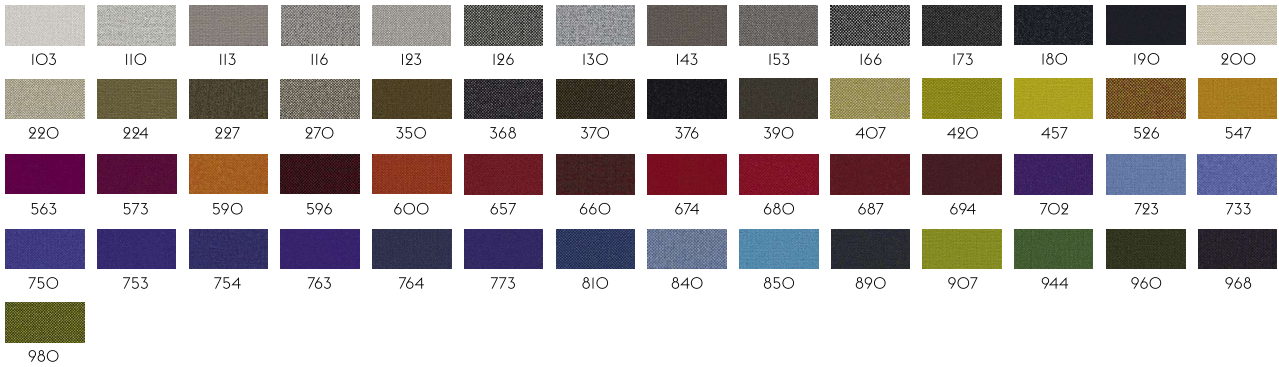
Composition: 70% new wool, 30% viscose.

Durability: 100.000 Martindale / Lightfastness 6-7.

Sustainability: Complies with both EU ecolabel "The Flower" and Greenguard Gold Certification.



100



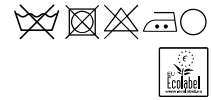
### HERO BY KVADRAT

Designer: Patricia Urquiola.

Composition: 96% new wool, 4% nylon.

Durability: 45.000 Martindale.

Sustainability: Complies with EU ecolabel "The Flower".



101



Textile Options



### OCEAN BY ROHLEDER

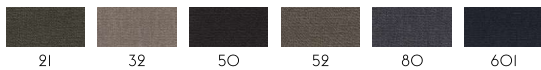
Designer: Rohleder

Composition: 74% Polyacrylic / 26% Polyester

Durability: 30.000 Martindale / Lightfastness 5-7 (ISO 1-8)



3



172



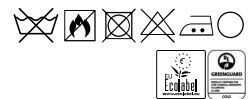
### REMIX BY KVADRAT

Designer: Giulio Ridolfo.

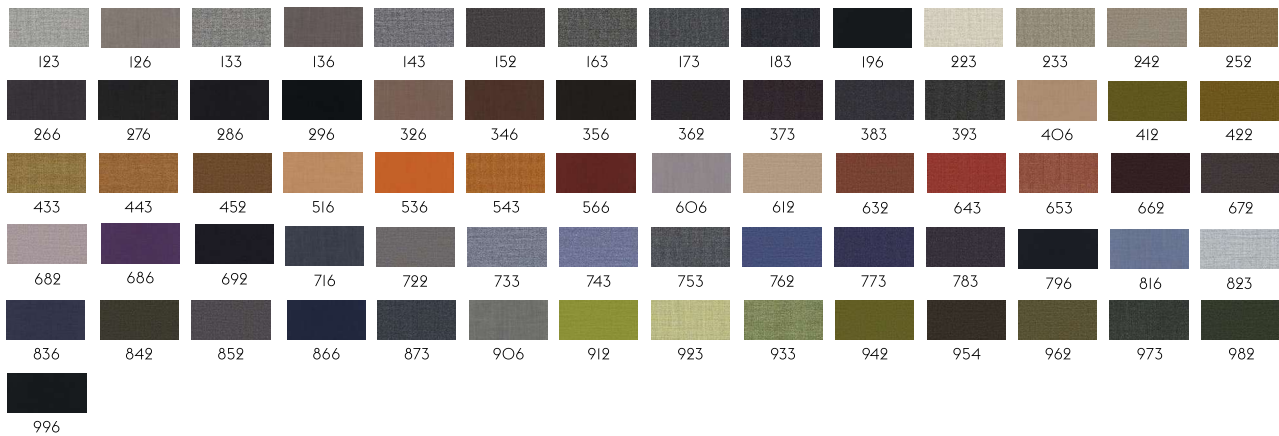
Composition: 90% new wool worsted, 10% nylon.

Durability: 100.000 Martindale / Lightfastness 5-7 (ISO 1-8)

Sustainability: Complies with both EU ecolabel "The Flower" and Greenguard Gold Certification.



113







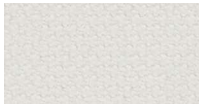
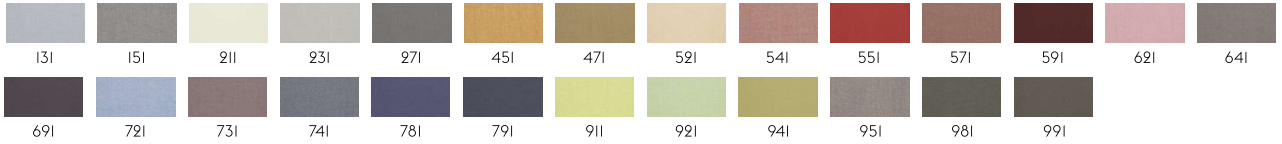
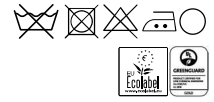
#### RIME BY KVADRAT

Designer: Åsa Pärson.

Composition: 90% new wool worsted, 10% nylon.

Durability: 100.000 Martindale.

Sustainability: Complies with both EU ecolabel "The Flower" and Greenguard Gold Certification.



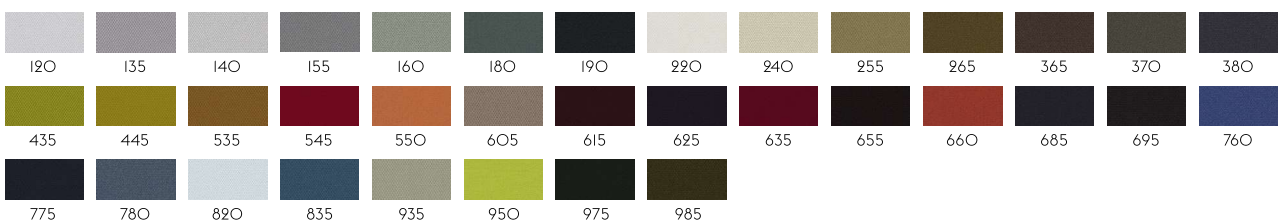
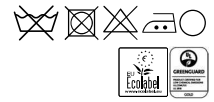
#### STEELCUT BY KVADRAT

Designer: Dijkmeijer & Ridolfo.

Composition: 90% new wool worsted, 10% nylon.

Durability: 80.000 Martindale / Lightfastness 5-7 (ISO 1-8)

Sustainability: Complies with both EU ecolabel "The Flower" and Greenguard Gold Certification.



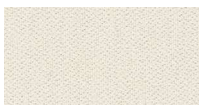
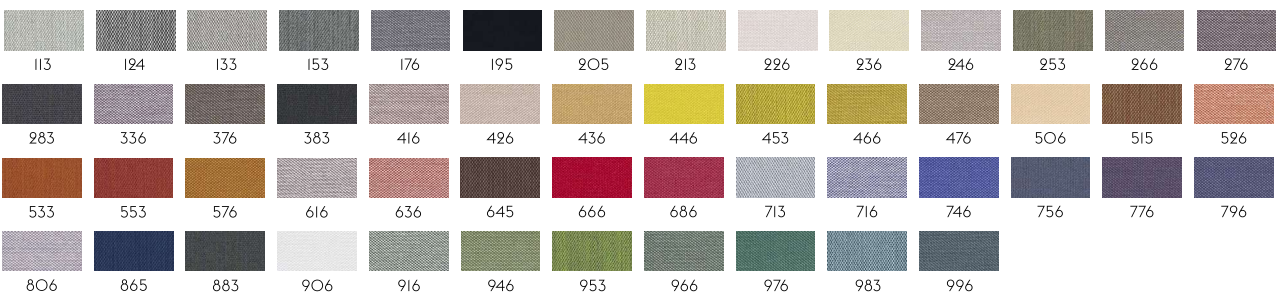
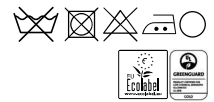
#### STEELCUT TRIO BY KVADRAT

Designer: Dijkmeijer & Ridolfo

Composition: 90% new wool worsted, 10% nylon.

Durability: 100.000 martindale / Lightfastness 5-7 (ISO 1-8).

Sustainability: Complies with both EU ecolabel "The Flower" and Greenguard Gold Certification.

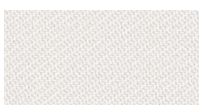
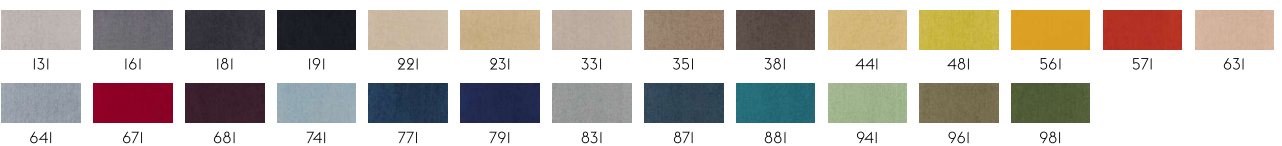


#### STILL BY KVADRAT

Designer: Georgina Wright

Composition: 100% Trevira CS

Durability: 50.000 Martindale / Lightfastness: 6



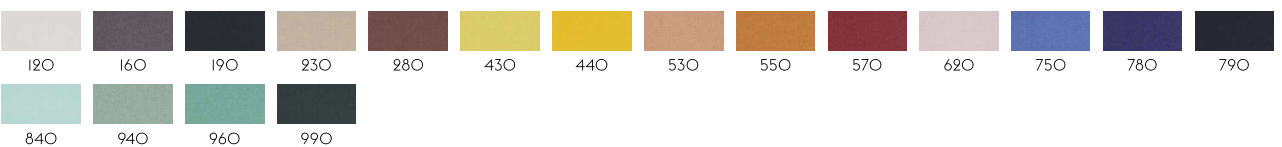
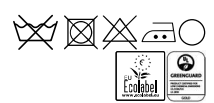
#### TWILL WEAVE BY KVADRAT

Designer: Jonathan Olivares

Composition: 90% new wool (worsted), 10% nylon

Durability: 60.000 Martindale

Sustainability: Complies with both EU ecolabel "The Flower" and Greenguard Gold Certification.

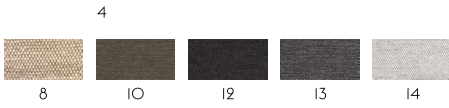






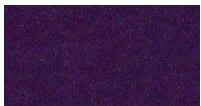
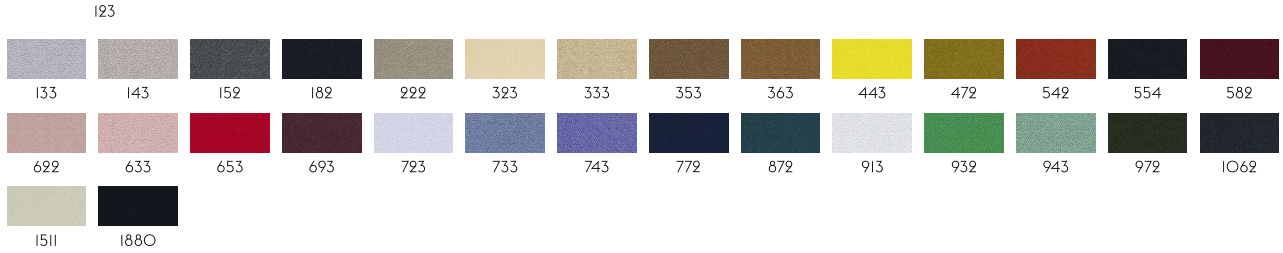
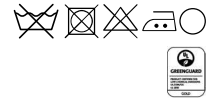
#### VANCOUVER BY ARVE

Designer: Gabriella Zecca  
Composition: 52% cotton, 48% acrylic.  
Durability: 40.000 Martindale / Lightfastness 4-5.



#### VIDAR BY KVADRAT

Designer: Raf Simons & Fanny Aronsen for Kvadrat.  
Composition: 94% new wool, 6% nylon.  
Durability: 100.000 Martindale / Lightfastness 6-7.  
Sustainability: Natural fibres / Sustainable resource. Complies with Greenguard Gold Certification.

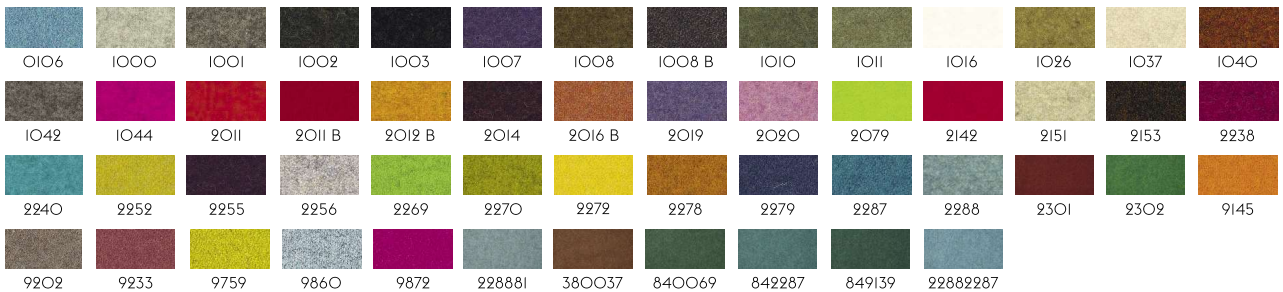


#### WOOLY BY NEVOTEX

Designer: Nevotex  
Composition: 70% wool, 25% polyamide, 5% other fibres.  
Durability: 150.000 Martindale / Lightfastness 6-8.



Wooly is woven in 70% recycled wool, sourced from leftover materials of clothing production and other wool products. One kilo of pure new wool generates 9 kilograms of carbon dioxide when produced while processing one kilo of recycled wool only generates 0.5 kilograms of carbon dioxide. Furthermore, recycled wool has a positive environmental impact due to lessened water consumption and lower energy consumption.



## LEATHER OPTIONS

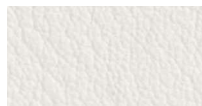
At Muuto, we work with some of the leading European leather suppliers to ensure that the leather used for our designs is always of the highest possible standard. Our leather options range from the Refine Leather, a modern and sleek full-grain leather with a soft touch, over Easy Leather, a lightly buffed natural grain leather with a soft and waxy feel along with a matte look, to our Endure Leather, a pliable and extremely durable semi-aniline leather ideal for hard contract environments, and the Faux Leather, being particularly suitable for healthcare and education environments as it is resistant to disinfectants.



#### EASY LEATHER

Lightly Buffed Natural Grain Leather  
Raw material: Designed and processed in Italy. The leather is dyed through, chrome tanned and finishing is with resins and pigments.





CWIT

#### ENDURE LEATHER

Semi-aniline leather with high durability, making it ideal for contract environments.

Raw material: Leather from Scandinavian raw hides.

The leather is dyed through a chrome free

tanning process. Also available in custom colors in a minimum of 1 hide.



Leather Options



AMST

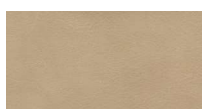
#### FAUX LEATHER

Imitation leather.

Composition: 85% PVC, 15% cotton. Durability: 75,000 Martindale.

Resistant to disinfectant which makes it suitable for Healthcare and Education environments. IMO certified.

Note that this product contains O,I - O,2 8 C,C'-azodi (formamide), CAS no. 123-77-3.



CREM

#### REFINE LEATHER

Aniline Leather.

Raw material: Grain leather from European raw hides. The leather is dyed through, chrome tanned and produced without the use of PCP and CFC which can be damaging to the environment.

